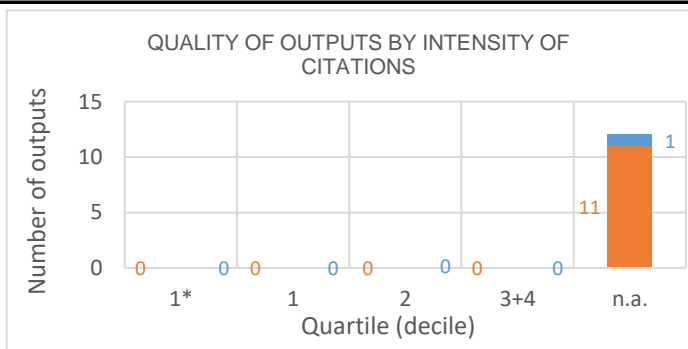
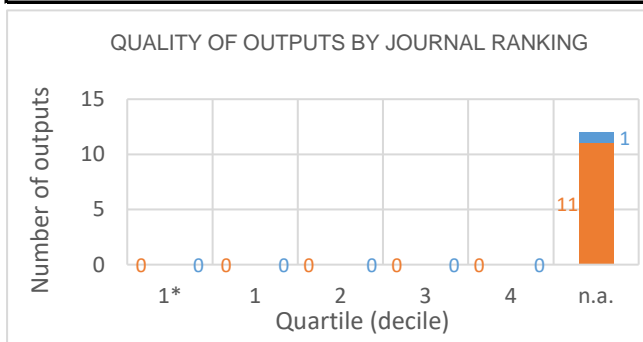


# Evaluation of the Research and Professional Activities of the Institutes of the Czech Academy of Sciences for 2015–2019

## BIBLIOMETRIC PARAMETERS OF ALL OUTPUTS INCLUDING THOSE EVALUATED IN THE PHASE I.

**Institute:** Masaryk Institute and Archives of the CAS, v. v. i.  
**Team:** Research on Czech Statehood 1848–1948. Concepts, Practices, Reflections  
**Head:** Dagmar Hájková  
**Field:** History and Archaeology  
**Total number of outputs:** 12      **Evaluated outputs:** 11



### TYPES OF COLLABORATION

Collaboration	Outputs (evaluated)	Outputs (not evaluated)
A1		1
B		
B1		
C		
C1		
D		
D1		
E		
n.a.	11	
Without affiliation		
A1+B1+C1+D1		1
B+C+D+E		

### FIELD STRUCTURE OF OUTPUTS

Field structure of outputs	Outputs (evaluated)	Outputs (not evaluated)
n.a.	11	
History		1

**Total number of outputs:** outputs of the team published during the evaluated period 2015-2019.

**Evaluated outputs:** selected outputs submitted by the team to the Phase I of evaluation.

**Outputs used for bibliometry:** subset of all outputs registered in the Web of Science; document type: article, review or proceedings paper.

**Quality of outputs by journal ranking:** number of outputs in top decile (1\*) and quartiles (1-4) by AIS of journals; n. a. - outputs in journals without AIS; orange: outputs from the Phase I, blue: the other outputs of the team.

**Quality of outputs by intensity of citations:** number of outputs in the top decile (1\*) and in quartiles (1, 2, 3+4) determined from the list of outputs ordered by the number of citations (downloaded from the Web of Science at the beginning of evaluation) for each subject category, year, and type of output; n. a. – the data are not robust enough for relevant judgement; orange: outputs from the Phase I, blue: the other outputs of the team.

**Types of collaboration:** outputs created exclusively in a particular institute are marked by A1, outputs created within national cooperation by max. 5 organizations are marked by B, outputs created within international cooperation by max. 5 organizations are marked C, outputs created within large collaboration exceeding 5 organizations are marked D, outputs created within large international collaboration are marked E. It is distinguished by marking B1/B, C1/C and D1/D whether the output has/does not have a corresponding author from a particular team.

**Field structure of outputs:** number of outputs of the team in different subject categories (subfields); if the output is assigned to more than one field, the field where the publication performs best (assessed by Quality of outputs by journals ranking) is taken; the table shows up to 20 fields.

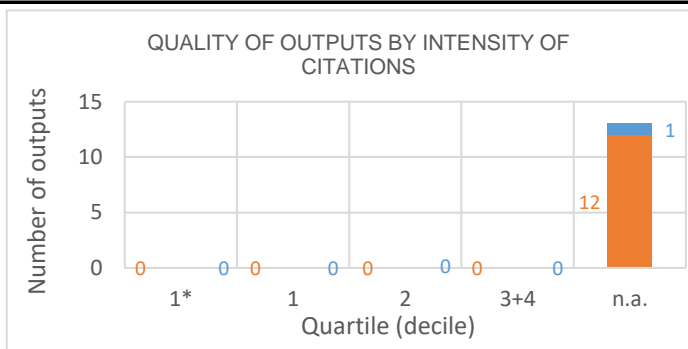
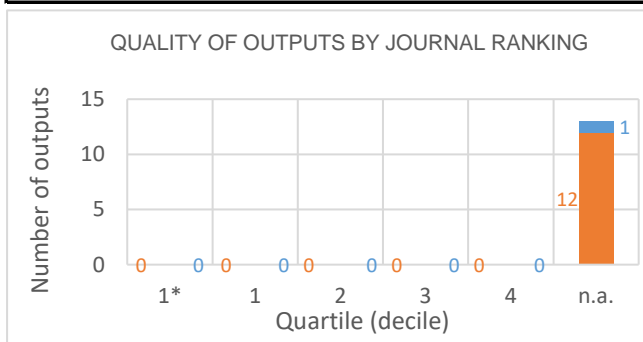
**Detailed explanation of the indicators is provided in the Methodology of evaluation, Annex 2 – Bibliometrics.**

**NOTE:** The significance of bibliometrics in humanities is very limited. Therefore, the results of bibliometric analysis were not provided to the Commission.

# Evaluation of the Research and Professional Activities of the Institutes of the Czech Academy of Sciences for 2015–2019

## BIBLIOMETRIC PARAMETERS OF ALL OUTPUTS INCLUDING THOSE EVALUATED IN THE PHASE I.

**Institute:** Masaryk Institute and Archives of the CAS, v. v. i.  
**Team:** T. G. Masaryk and His Collaborators. Research – Editions – Popularisation  
**Head:** Lucie Merhautová  
**Field:** History and Archaeology  
**Total number of outputs:** 13      **Evaluated outputs:** 12



### TYPES OF COLLABORATION

Collaboration	Outputs (evaluated)	Outputs (not evaluated)
A1		1
B		
B1		
C		
C1		
D		
D1		
E		
n.a.	12	
Without affiliation		
A1+B1+C1+D1		1
B+C+D+E		

### FIELD STRUCTURE OF OUTPUTS

Field structure of outputs	Outputs (evaluated)	Outputs (not evaluated)
n.a.	12	
Philosophy		1

**Total number of outputs:** outputs of the team published during the evaluated period 2015-2019.

**Evaluated outputs:** selected outputs submitted by the team to the Phase I of evaluation.

**Outputs used for bibliometry:** subset of all outputs registered in the Web of Science; document type: article, review or proceedings paper.

**Quality of outputs by journal ranking:** number of outputs in top decile (1\*) and quartiles (1-4) by AIS of journals; n. a. - outputs in journals without AIS; orange: outputs from the Phase I, blue: the other outputs of the team.

**Quality of outputs by intensity of citations:** number of outputs in the top decile (1\*) and in quartiles (1, 2, 3+4) determined from the list of outputs ordered by the number of citations (downloaded from the Web of Science at the beginning of evaluation) for each subject category, year, and type of output; n. a. – the data are not robust enough for relevant judgement; orange: outputs from the Phase I, blue: the other outputs of the team.

**Types of collaboration:** outputs created exclusively in a particular institute are marked by A1, outputs created within national cooperation by max. 5 organizations are marked by B, outputs created within international cooperation by max. 5 organizations are marked C, outputs created within large collaboration exceeding 5 organizations are marked D, outputs created within large international collaboration are marked E. It is distinguished by marking B1/B, C1/C and D1/D whether the output has/does not have a corresponding author from a particular team.

**Field structure of outputs:** number of outputs of the team in different subject categories (subfields); if the output is assigned to more than one field, the field where the publication performs best (assessed by Quality of outputs by journals ranking) is taken; the table shows up to 20 fields.

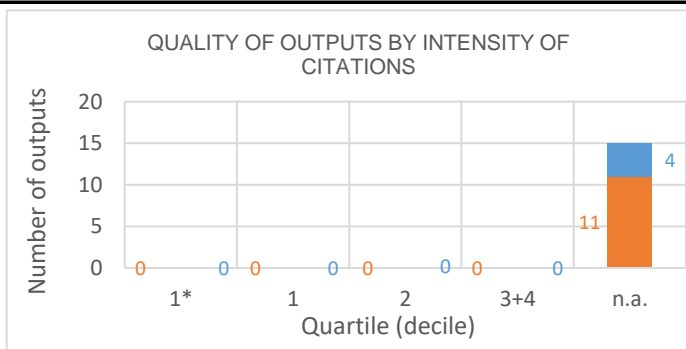
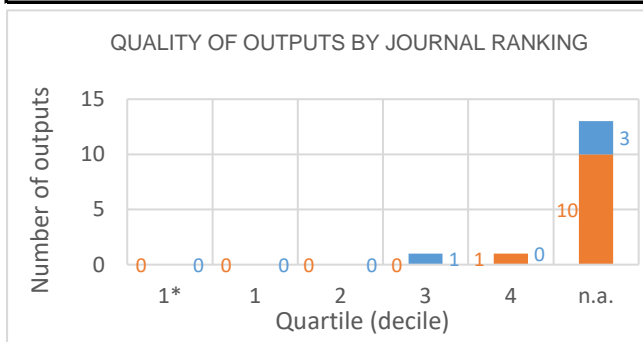
**Detailed explanation of the indicators is provided in the Methodology of evaluation, Annex 2 – Bibliometrics.**

**NOTE:** The significance of bibliometrics in humanities is very limited. Therefore, the results of bibliometric analysis were not provided to the Commission.

# Evaluation of the Research and Professional Activities of the Institutes of the Czech Academy of Sciences for 2015–2019

## BIBLIOMETRIC PARAMETERS OF ALL OUTPUTS INCLUDING THOSE EVALUATED IN THE PHASE I.

**Institute:** Masaryk Institute and Archives of the CAS, v. v. i.  
**Team:** Religious, Social, and Economic History  
**Head:** Martin Jemelka  
**Field:** History and Archaeology  
**Total number of outputs:** 15      **Evaluated outputs:** 11



### TYPES OF COLLABORATION

Collaboration	Outputs (evaluated)	Outputs (not evaluated)
A1	1	3
B	1	
B1		
C		
C1		
D		
D1		
E		
n.a.	9	
Without affiliation		1
A1+B1+C1+D1	1	3
B+C+D+E	1	

### FIELD STRUCTURE OF OUTPUTS

Field structure of outputs	Outputs (evaluated)	Outputs (not evaluated)
n.a.	9	
History	1	2
Religion	1	1
Anthropology	1	
Area Studies		1
Family Studies	1	
History Of Social Sciences	1	
Political Science		1

**Total number of outputs:** outputs of the team published during the evaluated period 2015-2019.

**Evaluated outputs:** selected outputs submitted by the team to the Phase I of evaluation.

**Outputs used for bibliometry:** subset of all outputs registered in the Web of Science; document type: article, review or proceedings paper.

**Quality of outputs by journal ranking:** number of outputs in top decile (1\*) and quartiles (1-4) by AIS of journals; n. a. - outputs in journals without AIS; orange: outputs from the Phase I, blue: the other outputs of the team.

**Quality of outputs by intensity of citations:** number of outputs in the top decile (1\*) and in quartiles (1, 2, 3+4) determined from the list of outputs ordered by the number of citations (downloaded from the Web of Science at the beginning of evaluation) for each subject category, year, and type of output; n. a. – the data are not robust enough for relevant judgement; orange: outputs from the Phase I, blue: the other outputs of the team.

**Types of collaboration:** outputs created exclusively in a particular institute are marked by A1, outputs created within national cooperation by max. 5 organizations are marked by B, outputs created within international cooperation by max. 5 organizations are marked C, outputs created within large collaboration exceeding 5 organizations are marked D, outputs created within large international collaboration are marked E. It is distinguished by marking B1/B, C1/C and D1/D whether the output has/does not have a corresponding author from a particular team.

**Field structure of outputs:** number of outputs of the team in different subject categories (subfields); if the output is assigned to more than one field, the field where the publication performs best (assessed by Quality of outputs by journals ranking) is taken; the table shows up to 20 fields.

**Detailed explanation of the indicators is provided in the Methodology of evaluation, Annex 2 – Bibliometrics.**

**NOTE:** The significance of bibliometrics in humanities is very limited. Therefore, the results of bibliometric analysis were not provided to the Commission.

# Evaluation of the Research and Professional Activities of the Institutes of the Czech Academy of Sciences for 2015–2019

## BIBLIOMETRIC PARAMETERS OF ALL OUTPUTS INCLUDING THOSE EVALUATED IN THE PHASE I.

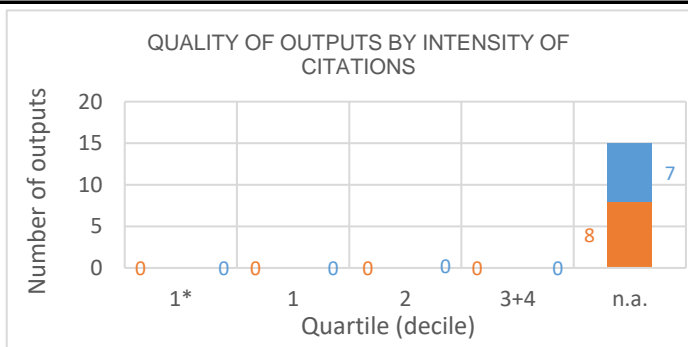
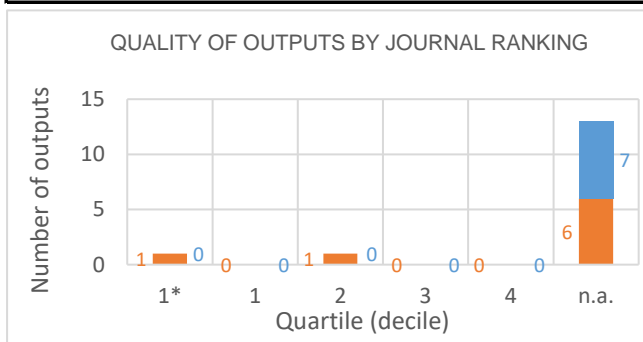
**Institute:** Masaryk Institute and Archives of the CAS, v. v. i.

**Team:** Comparative and Transnational History

**Head:** Rudolf Kučera

**Field:** History and Archaeology

**Total number of outputs:** 15      **Evaluated outputs:** 8



### TYPES OF COLLABORATION

Collaboration	Outputs (evaluated)	Outputs (not evaluated)
A1	2	1
B		
B1		1
C		1
C1	1	
D		
D1		
E		
n.a.	5	4
Without affiliation		
A1+B1+C1+D1	3	2
B+C+D+E		1

### FIELD STRUCTURE OF OUTPUTS

Field structure of outputs	Outputs (evaluated)	Outputs (not evaluated)
n.a.	5	4
History	2	2
Computer Science Interdisciplinary A		1
Computer Science Theory Methods		1
Religion	1	

**Total number of outputs:** outputs of the team published during the evaluated period 2015-2019.

**Evaluated outputs:** selected outputs submitted by the team to the Phase I of evaluation.

**Outputs used for bibliometry:** subset of all outputs registered in the Web of Science; document type: article, review or proceedings paper.

**Quality of outputs by journal ranking:** number of outputs in top decile (1\*) and quartiles (1-4) by AIS of journals; n. a. - outputs in journals without AIS; orange: outputs from the Phase I, blue: the other outputs of the team.

**Quality of outputs by intensity of citations:** number of outputs in the top decile (1\*) and in quartiles (1, 2, 3+4) determined from the list of outputs ordered by the number of citations (downloaded from the Web of Science at the beginning of evaluation) for each subject category, year, and type of output; n. a. – the data are not robust enough for relevant judgement; orange: outputs from the Phase I, blue: the other outputs of the team.

**Types of collaboration:** outputs created exclusively in a particular institute are marked by A1, outputs created within national cooperation by max. 5 organizations are marked by B, outputs created within international cooperation by max. 5 organizations are marked C, outputs created within large collaboration exceeding 5 organizations are marked D, outputs created within large international collaboration are marked E. It is distinguished by marking B1/B, C1/C and D1/D whether the output has/does not have a corresponding author from a particular team.

**Field structure of outputs:** number of outputs of the team in different subject categories (subfields); if the output is assigned to more than one field, the field where the publication performs best (assessed by Quality of outputs by journals ranking) is taken; the table shows up to 20 fields.

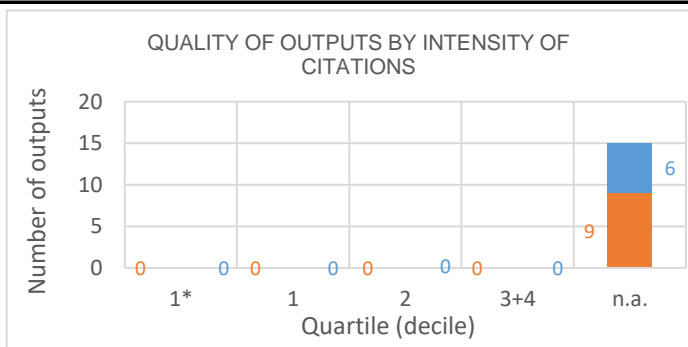
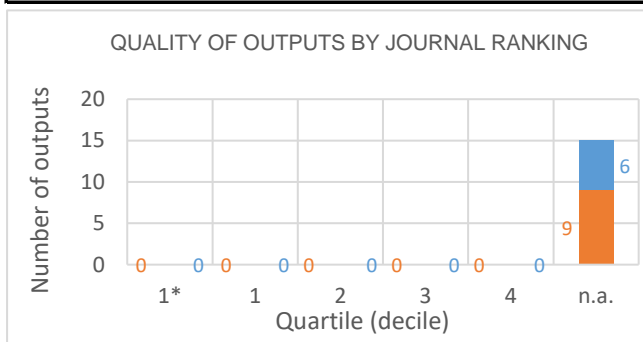
**Detailed explanation of the indicators is provided in the Methodology of evaluation, Annex 2 – Bibliometrics.**

**NOTE:** The significance of bibliometrics in humanities is very limited. Therefore, the results of bibliometric analysis were not provided to the Commission.

# Evaluation of the Research and Professional Activities of the Institutes of the Czech Academy of Sciences for 2015–2019

## BIBLIOMETRIC PARAMETERS OF ALL OUTPUTS INCLUDING THOSE EVALUATED IN THE PHASE I.

**Institute:** Masaryk Institute and Archives of the CAS, v. v. i.  
**Team:** Codicology: Study and Cataloguing of Manuscripts  
**Head:** Marta Hradilová  
**Field:** History and Archaeology  
**Total number of outputs:** 15      **Evaluated outputs:** 9



### TYPES OF COLLABORATION

Collaboration	Outputs (evaluated)	Outputs (not evaluated)
A1	1	4
B		
B1		
C		
C1		
D		
D1		
E		
n.a.	8	2
Without affiliation		
A1+B1+C1+D1	1	4
B+C+D+E		

### FIELD STRUCTURE OF OUTPUTS

Field structure of outputs	Outputs (evaluated)	Outputs (not evaluated)
n.a.	8	2
Art		3
Humanities Multidisciplinary		1
Literature	1	
Medieval Renaissance Studies	1	

**Total number of outputs:** outputs of the team published during the evaluated period 2015-2019.

**Evaluated outputs:** selected outputs submitted by the team to the Phase I of evaluation.

**Outputs used for bibliometry:** subset of all outputs registered in the Web of Science; document type: article, review or proceedings paper.

**Quality of outputs by journal ranking:** number of outputs in top decile (1\*) and quartiles (1-4) by AIS of journals; n. a. - outputs in journals without AIS; orange: outputs from the Phase I, blue: the other outputs of the team.

**Quality of outputs by intensity of citations:** number of outputs in the top decile (1\*) and in quartiles (1, 2, 3+4) determined from the list of outputs ordered by the number of citations (downloaded from the Web of Science at the beginning of evaluation) for each subject category, year, and type of output; n. a. – the data are not robust enough for relevant judgement; orange: outputs from the Phase I, blue: the other outputs of the team.

**Types of collaboration:** outputs created exclusively in a particular institute are marked by A1, outputs created within national cooperation by max. 5 organizations are marked by B, outputs created within international cooperation by max. 5 organizations are marked C, outputs created within large collaboration exceeding 5 organizations are marked D, outputs created within large international collaboration are marked E. It is distinguished by marking B1/B, C1/C and D1/D whether the output has/does not have a corresponding author from a particular team.

**Field structure of outputs:** number of outputs of the team in different subject categories (subfields); if the output is assigned to more than one field, the field where the publication performs best (assessed by Quality of outputs by journals ranking) is taken; the table shows up to 20 fields.

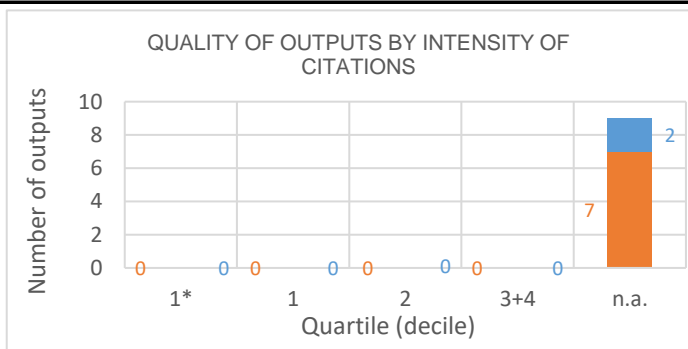
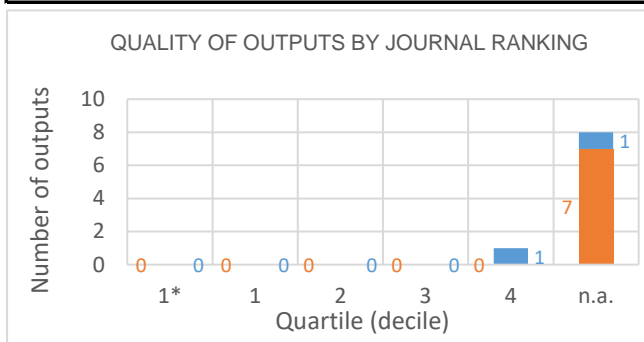
**Detailed explanation of the indicators is provided in the Methodology of evaluation, Annex 2 – Bibliometrics.**

**NOTE:** The significance of bibliometrics in humanities is very limited. Therefore, the results of bibliometric analysis were not provided to the Commission.

# Evaluation of the Research and Professional Activities of the Institutes of the Czech Academy of Sciences for 2015–2019

## BIBLIOMETRIC PARAMETERS OF ALL OUTPUTS INCLUDING THOSE EVALUATED IN THE PHASE I.

**Institute:** Masaryk Institute and Archives of the CAS, v. v. i.  
**Team:** History of Science and Scientists in the 20th Century Society  
**Head:** Martin Franc  
**Field:** History and Archaeology  
**Total number of outputs:** 9      **Evaluated outputs:** 7



### TYPES OF COLLABORATION

Collaboration	Outputs (evaluated)	Outputs (not evaluated)
A1		
B		
B1		1
C		
C1		
D		
D1		
E		
n.a.	7	1
Without affiliation		
A1+B1+C1+D1		1
B+C+D+E		

### FIELD STRUCTURE OF OUTPUTS

Field structure of outputs	Outputs (evaluated)	Outputs (not evaluated)
n.a.	7	1
Chemistry Multidisciplinary		1

**Total number of outputs:** outputs of the team published during the evaluated period 2015-2019.

**Evaluated outputs:** selected outputs submitted by the team to the Phase I of evaluation.

**Outputs used for bibliometry:** subset of all outputs registered in the Web of Science; document type: article, review or proceedings paper.

**Quality of outputs by journal ranking:** number of outputs in top decile (1\*) and quartiles (1-4) by AIS of journals; n. a. - outputs in journals without AIS; orange: outputs from the Phase I, blue: the other outputs of the team.

**Quality of outputs by intensity of citations:** number of outputs in the top decile (1\*) and in quartiles (1, 2, 3+4) determined from the list of outputs ordered by the number of citations (downloaded from the Web of Science at the beginning of evaluation) for each subject category, year, and type of output; n. a. – the data are not robust enough for relevant judgement; orange: outputs from the Phase I, blue: the other outputs of the team.

**Types of collaboration:** outputs created exclusively in a particular institute are marked by A1, outputs created within national cooperation by max. 5 organizations are marked by B, outputs created within international cooperation by max. 5 organizations are marked C, outputs created within large collaboration exceeding 5 organizations are marked D, outputs created within large international collaboration are marked E. It is distinguished by marking B1/B, C1/C and D1/D whether the output has/does not have a corresponding author from a particular team.

**Field structure of outputs:** number of outputs of the team in different subject categories (subfields); if the output is assigned to more than one field, the field where the publication performs best (assessed by Quality of outputs by journals ranking) is taken; the table shows up to 20 fields.

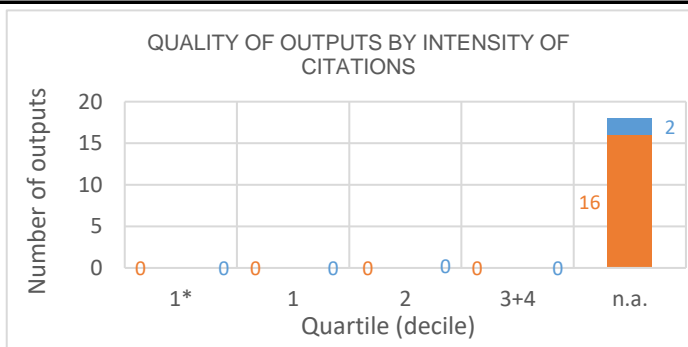
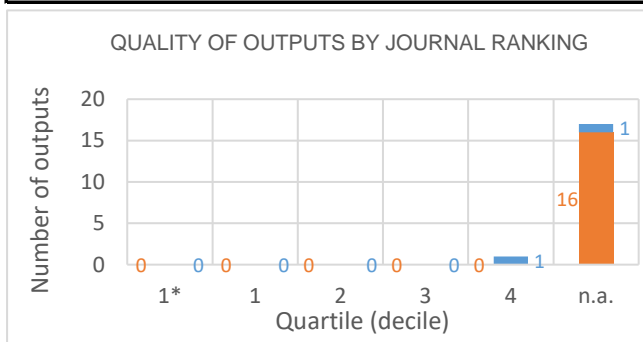
**Detailed explanation of the indicators is provided in the Methodology of evaluation, Annex 2 – Bibliometrics.**

**NOTE:** The significance of bibliometrics in humanities is very limited. Therefore, the results of bibliometric analysis were not provided to the Commission.

# Evaluation of the Research and Professional Activities of the Institutes of the Czech Academy of Sciences for 2015–2019

## BIBLIOMETRIC PARAMETERS OF ALL OUTPUTS INCLUDING THOSE EVALUATED IN THE PHASE I.

**Institute:** Masaryk Institute and Archives of the CAS, v. v. i.  
**Team:** Archival Processing and the Development of the CAS Archive and Record Management Infrastructure  
**Head:** Marie Bahenská  
**Field:** History and Archaeology  
**Total number of outputs:** 18      **Evaluated outputs:** 16



### TYPES OF COLLABORATION

Collaboration	Outputs (evaluated)	Outputs (not evaluated)
A1		2
B		
B1		
C		
C1		
D		
D1		
E		
n.a.	16	
Without affiliation		
A1+B1+C1+D1		2
B+C+D+E		

### FIELD STRUCTURE OF OUTPUTS

Field structure of outputs	Outputs (evaluated)	Outputs (not evaluated)
n.a.	16	
History		1
Literature Slavic		1

**Total number of outputs:** outputs of the team published during the evaluated period 2015-2019.

**Evaluated outputs:** selected outputs submitted by the team to the Phase I of evaluation.

**Outputs used for bibliometry:** subset of all outputs registered in the Web of Science; document type: article, review or proceedings paper.

**Quality of outputs by journal ranking:** number of outputs in top decile (1\*) and quartiles (1-4) by AIS of journals; n. a. - outputs in journals without AIS; orange: outputs from the Phase I, blue: the other outputs of the team.

**Quality of outputs by intensity of citations:** number of outputs in the top decile (1\*) and in quartiles (1, 2, 3+4) determined from the list of outputs ordered by the number of citations (downloaded from the Web of Science at the beginning of evaluation) for each subject category, year, and type of output; n. a. – the data are not robust enough for relevant judgement; orange: outputs from the Phase I, blue: the other outputs of the team.

**Types of collaboration:** outputs created exclusively in a particular institute are marked by A1, outputs created within national cooperation by max. 5 organizations are marked by B, outputs created within international cooperation by max. 5 organizations are marked C, outputs created within large collaboration exceeding 5 organizations are marked D, outputs created within large international collaboration are marked E. It is distinguished by marking B1/B, C1/C and D1/D whether the output has/does not have a corresponding author from a particular team.

**Field structure of outputs:** number of outputs of the team in different subject categories (subfields); if the output is assigned to more than one field, the field where the publication performs best (assessed by Quality of outputs by journals ranking) is taken; the table shows up to 20 fields.

**Detailed explanation of the indicators is provided in the Methodology of evaluation, Annex 2 – Bibliometrics.**

**NOTE:** The significance of bibliometrics in humanities is very limited. Therefore, the results of bibliometric analysis were not provided to the Commission.